

TROLLEY MEET



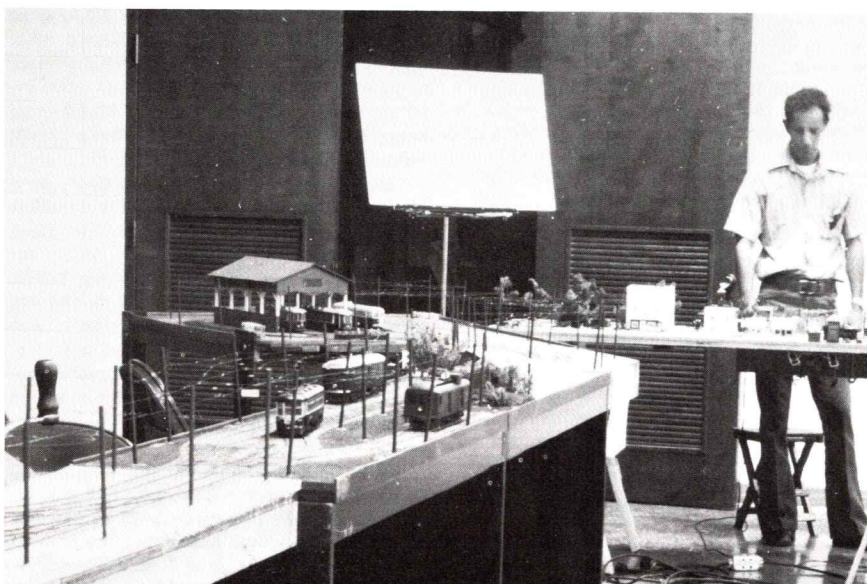
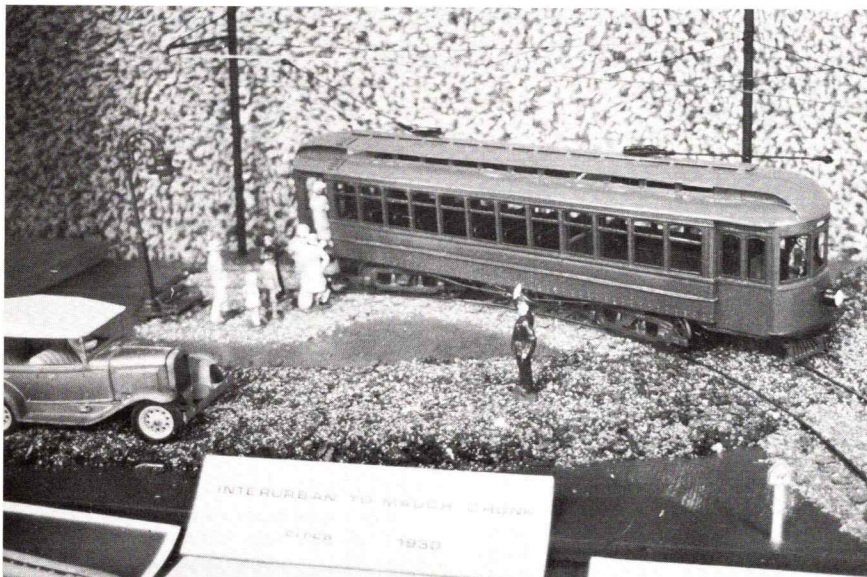
Dear Vane:

I'm enclosing a number of pictures covering a recent Hobby Show involvement by the East Penn Traction Club. As of this writing, we are a 42 member club holding monthly meetings at members' homes. The meetings are quite informal but cover operation on the member's layout, if any, plus slides and movies on traction subjects where layouts are not available. We also have the host discuss, as a clinic, any area in which he has developed a special expertise or way of doing something. Examples are Manny Reider's realistic building fronts and Henry Elsner's two diode control which does not require any special wire or trackwork.

This Hobby Show was held at Gloria Dei Lutheran Church, Huntington Valley, Pa., just outside Philadelphia, on October 6th. The pictures show modular activity in both HO and "O" gages plus 1/2" scale by yours truly. Also, the pix show two of the "poster-board clinics" which were used at the Meet and which were an interesting and attention-getting method of demonstrating things which could not be done at an ordinary clinic.

We have an active, interested group that knows no age or experience barrier covering scales from HO up to 3/4" at the present. The informal, unelected officers of the Club are Prexy John Derr, very well known as a traction and narrow gauge authority, Bert Holmes as Business Manager and myself as Secretary-Treasurer and single holdout, at this moment, for 1/2" scale. Others in the club who are well known in the traction fraternity are Dave Cope, Everitt Wood, Henry Elsner, John Breuer, Jim Grant, Herb Kephart, Andy Maginnis and Dr. Allan Rice (Uncle Eric LaNal).

Very truly yours,
Jim Richards
76 Heron Road
Holland, Pa. 18966

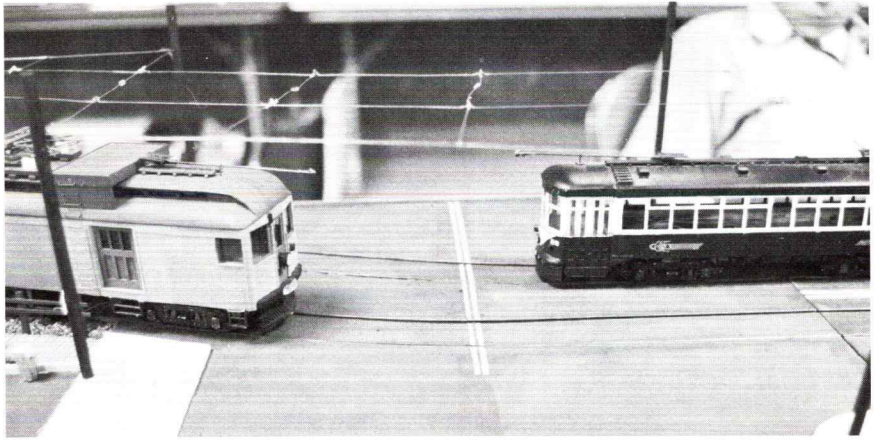


General view of layouts, HO on right, "O" on left, other exhibits on far wall, at start of show.

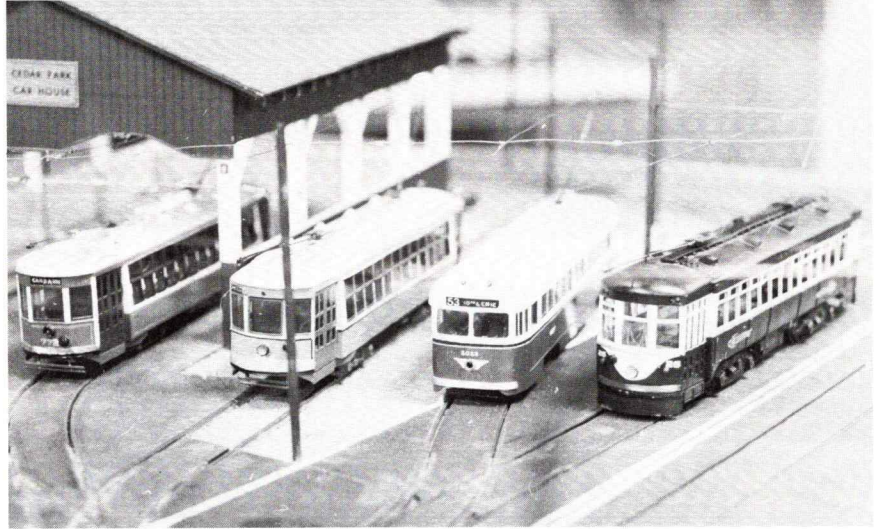
"Interurban to Mauch Chunk," featuring a 1/2" scale car built of epoxy cast parts by Jim Richards. Car is modeled after Cincinnati Car Co. design built for E. Penn Rys, Pottsville, Pa.

Howard Williams had to stand still for 2 minutes while this picture was made.

Cars built by Dave Gairo passing on a modular section built by John Breuer.

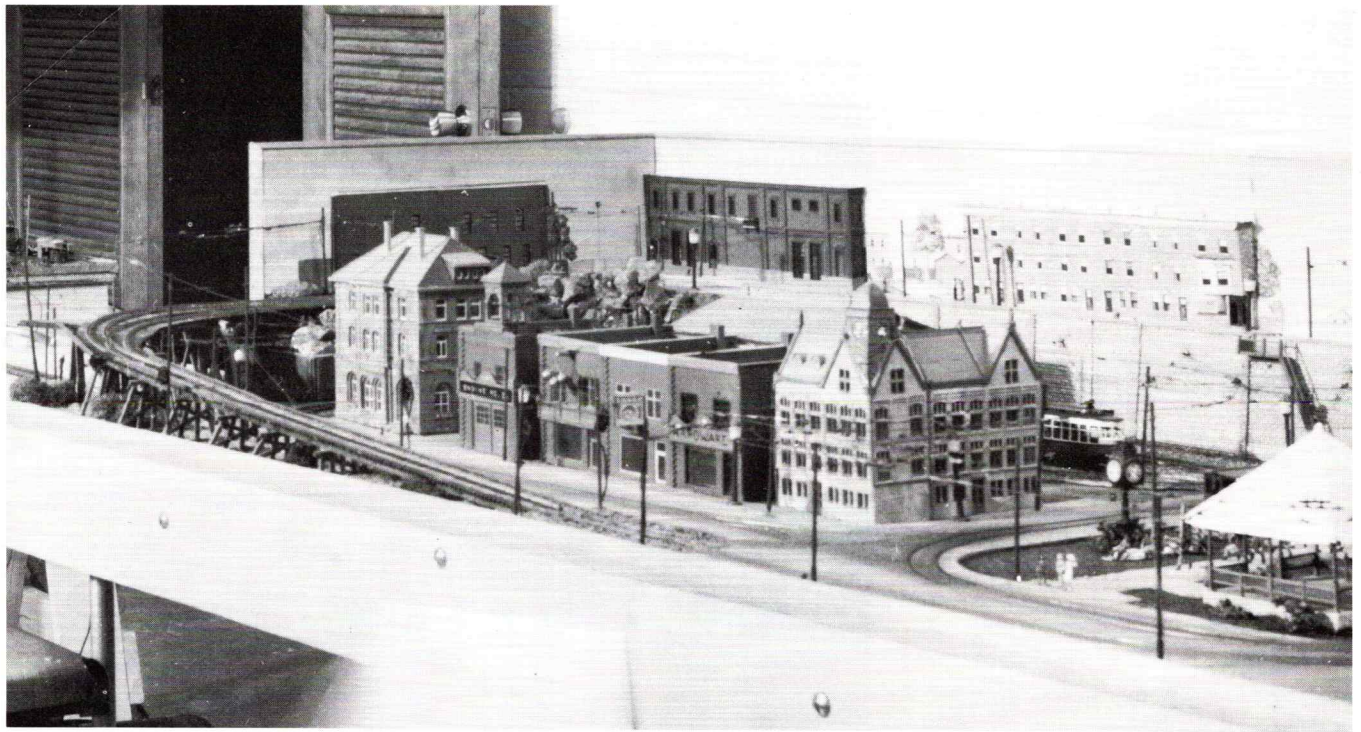


Part of the "O" gage fleet on John Derr's section.

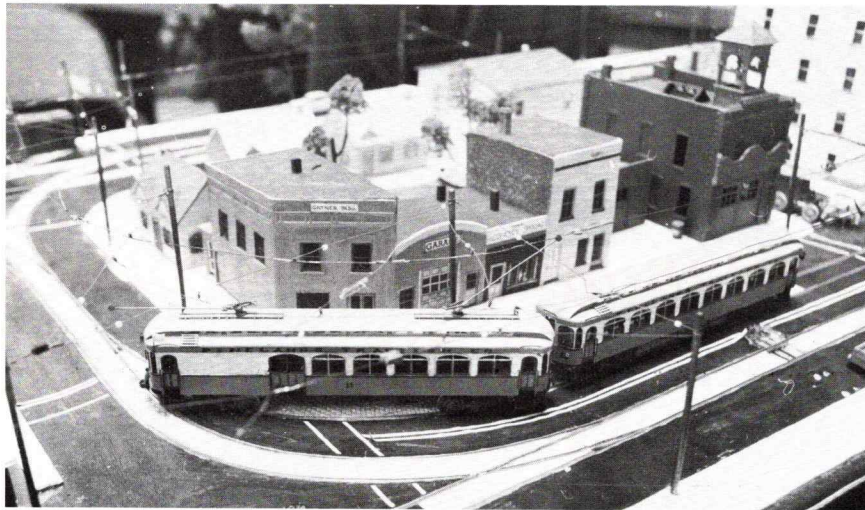


An overview of part of the MO modular built by Howard Williams, part of the "O" gage and the back wall showing "Poster Board Clinics," 1/2" scale cars and a Lionel standard gage train collection.

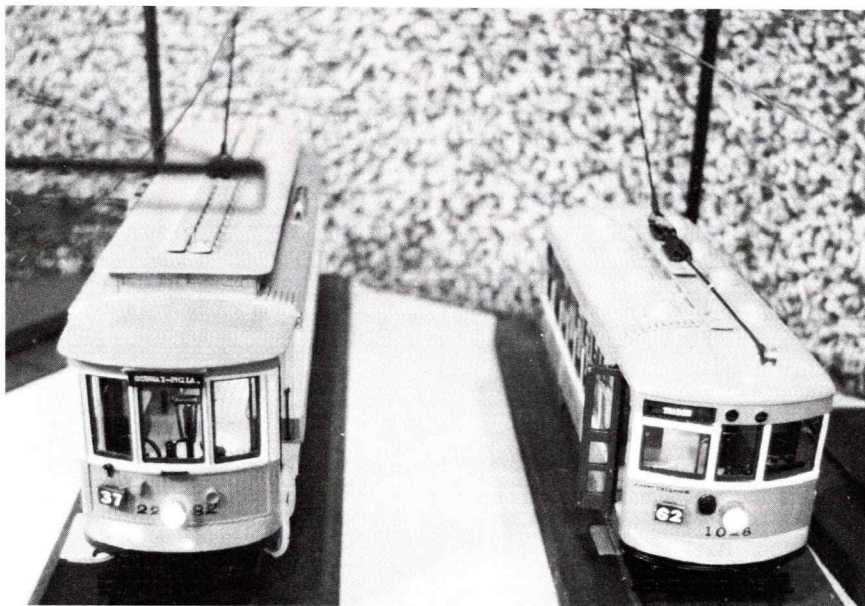




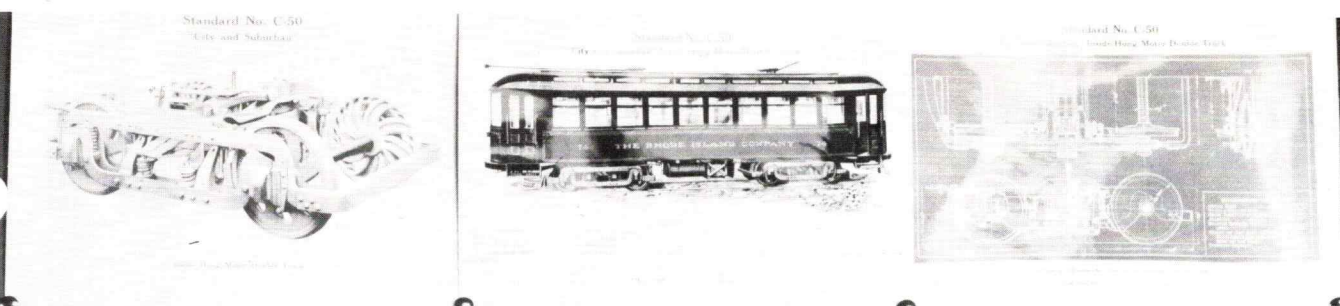
HO module by Ed Torpey.



HO cars operating on the section built by Howard Williams.



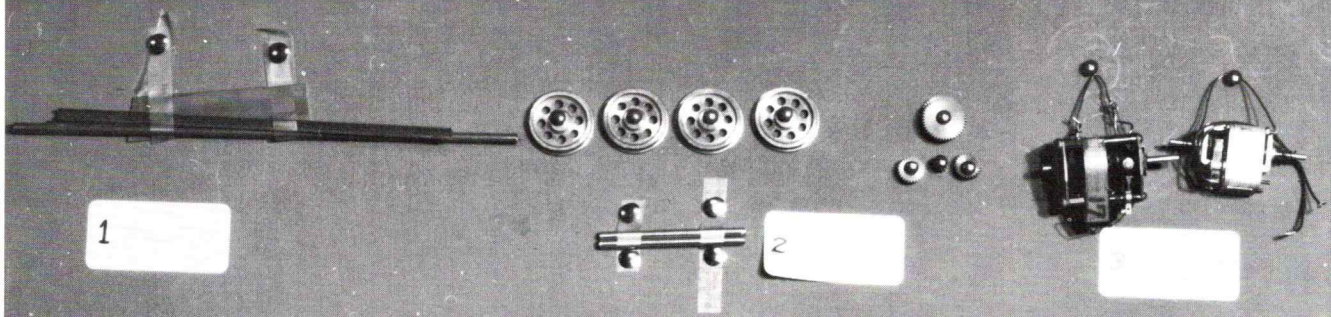
1/2" Scale operating models by Jim Richards.



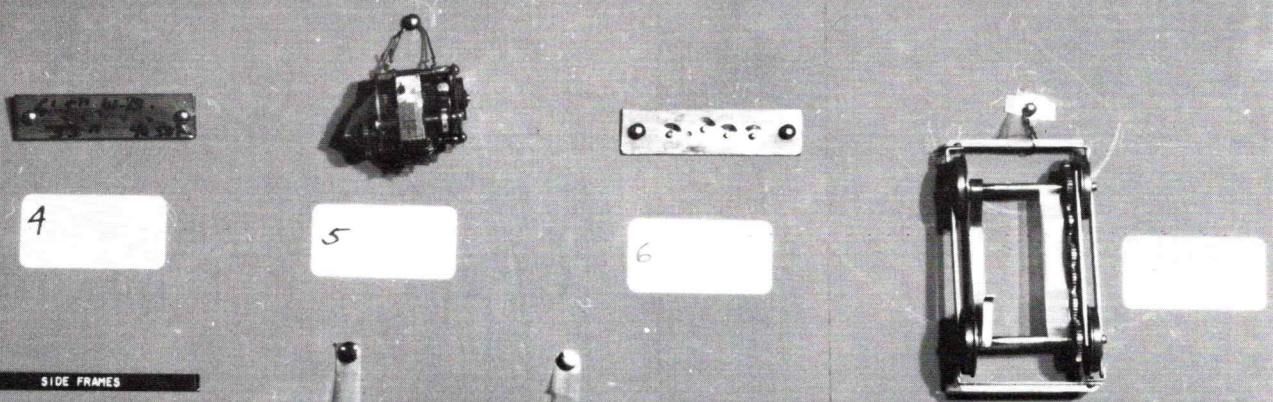
BUILDING A STANDARD C-50 TRUCK

1/2" SCALE

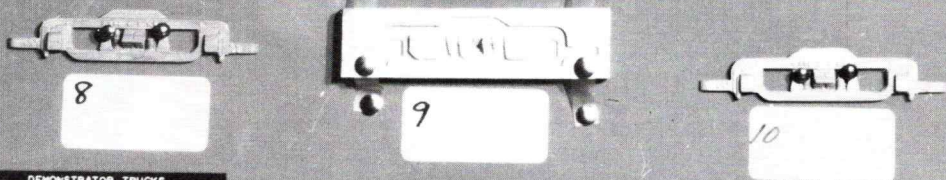
RAW MATERIALS NEEDED



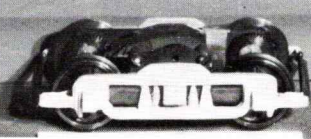
CONSTRUCTION STEPS



SIDE FRAMES



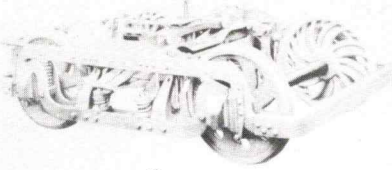
DEMONSTRATOR TRUCKS



JIM RICHARDS

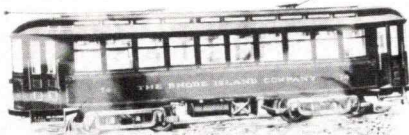
"Building a Standard C-50 Truck" in 1/2" scale—J. H. Richards.

Standard No. C-50
City and Suburban



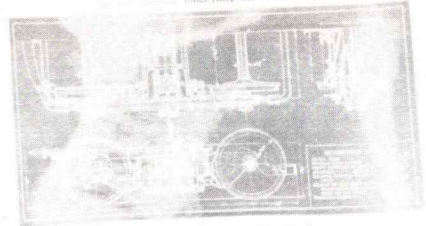
Standard No. C-50

Standard No. C-50



Standard No. C-50

Standard No. C-50



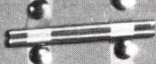
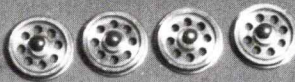
BUILDING A STANDARD C-50 TRUCK

1/2" SCALE

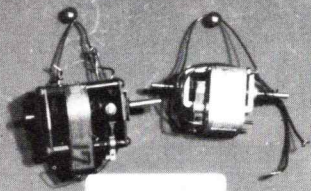
RAW MATERIALS NEEDED



1



2

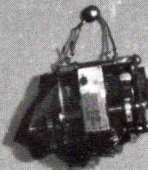


3

CONSTRUCTION STEPS



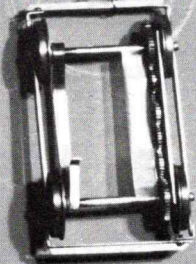
4



5



6

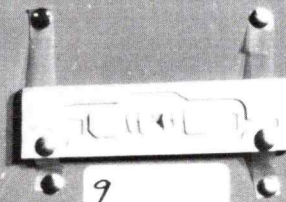


7

SIDE FRAMES



8

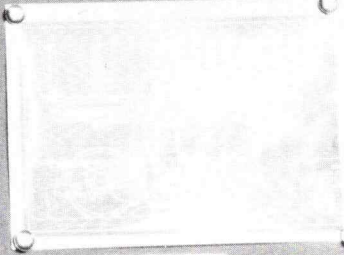


9

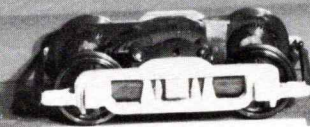


10

DEMONSTRATOR TRUCKS



11



JIM RICHARDS

"Building a Standard C-50 Truck" in 1/2" scale—J. H. Richards.